

Certification of Polish biomethane
for the attractive German fuel sector





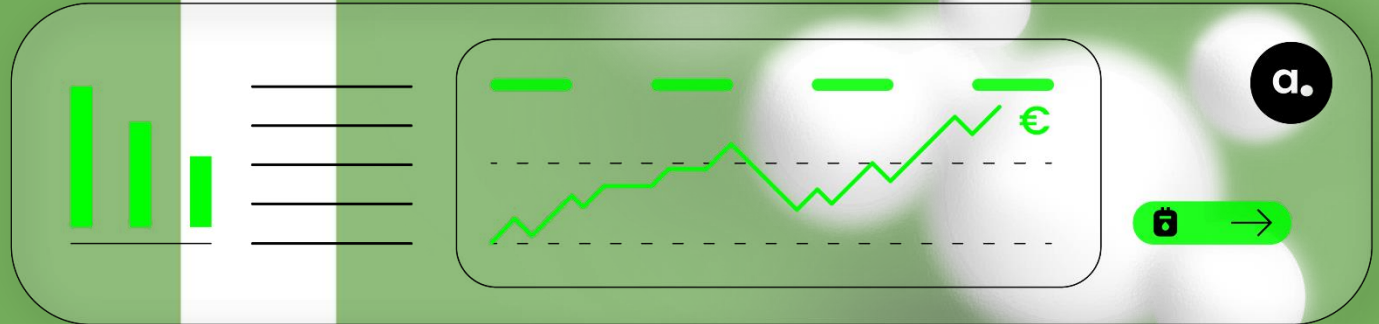
Support sustainability

Software and customised assistance with REDII issues



Brokerage service

Brokerage of biomethane, LCO₂, bio-LNG and GHG-quota



Introduction agriportance

agriportance.




20
employees

>300 satisfied
customers

Your biomethane
service provider



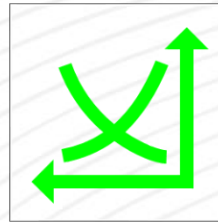
GHG reduction and German market prices

		CO ₂ -Emissions (g CO _{2eq} /MJ)	Price situation* (ct/kWh)
Crops		+25	8,5 – 9,0
Biowaste and residues		+5	> 10,0
Manure		-100	> 16,5
Fossil comparator		+94,1	

*for 7-year supply contracts summer 2023, start January 2024

Pricing German biomethane

Price-forming factors



Renewable gas price (TTF/ THE)

GHG quota price



Sustainability properties (GHG value, feedstock, ...)



Pricing German biomethane

Natural gas price - TTF chart in euros - 5 years

Options ▼ Currency: EUR ▼

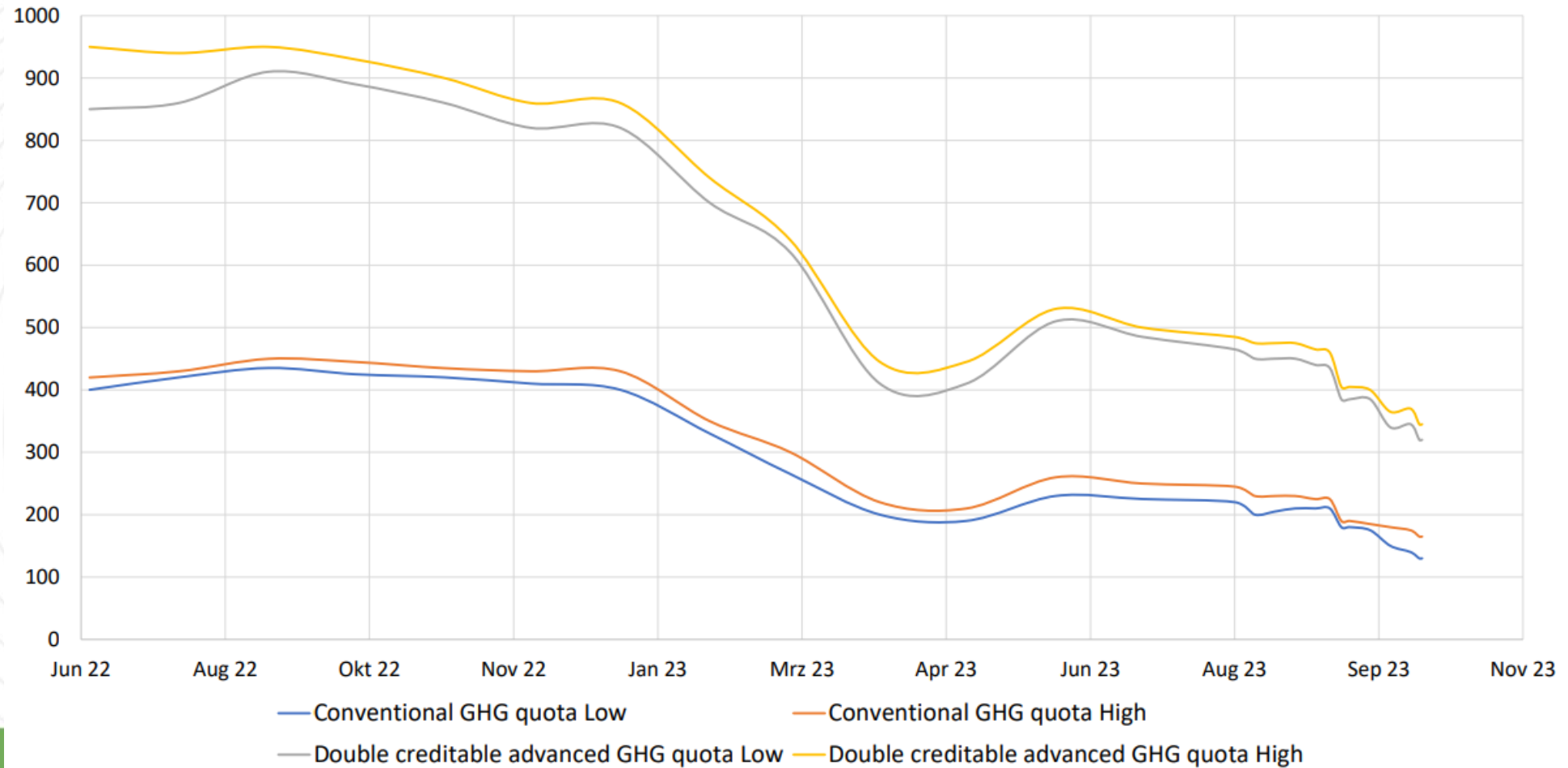
Intraday 1W 1M 3M 1y 3y 5yrs MAX



! <https://www.finanzen.net/rohstoffe/erdgas-preis-ttf> Quelle finanzen.net from 17th Oktober 2023

Pricing German biomethane

Annual overview of the conventional and double-countable advanced GHG quota for minimum and maximum prices per month in € / t CO₂eq (as of Oct 2023)



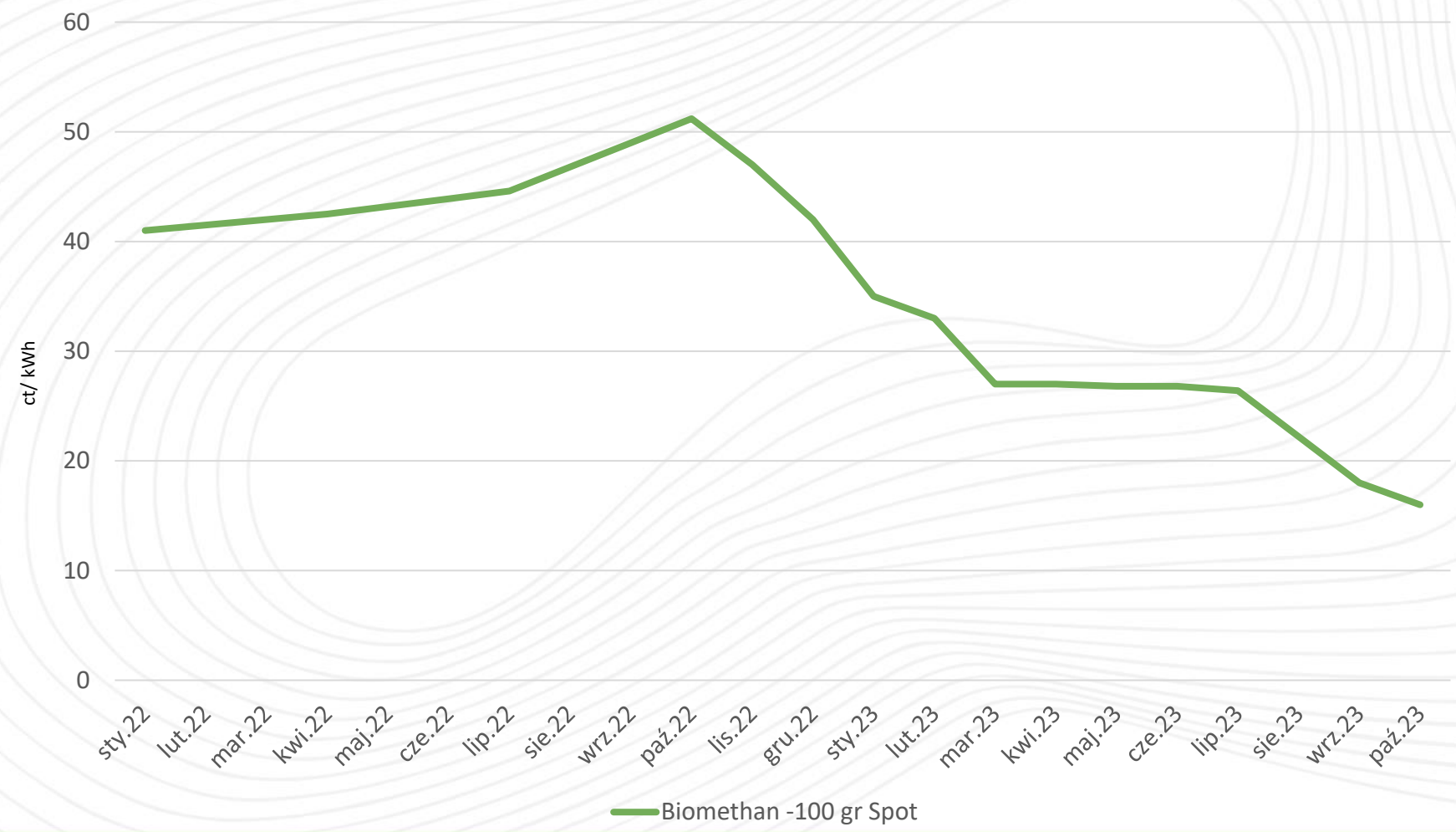
¹ Data agriportance GmbH, Argus Media Ltd.

GHG calculation

$$E = e_{ec} + e_l + e_p + e_{td} + e_u - e_{sca} - e_{ccs} - e_{ccr}$$

- E = Total emissions
- e_{ec} = Emissions Cultivation
- e_l = Emissions Land use change
- e_p = Emissions production
- e_{td} = Emissions during transport and distribution
- e_u = Emissions from the use of the fuel
- e_{sca} = Emissions through improved agricultural management practices
- e_{ccs} = Emission savings through CO2 capture and geological storage
- e_{ccr} = Emission savings through capture and replacement of CO2

Pricing German biomethane



1 Daten agriportance GmbH



Requirements for Polish biomethane for the marketing to Germany





WE ARE

agriportance.

Address

Lippstädter Straße 54
Businessdock Officepark Gebäude F
48155 Münster

Phone

+49 175 6335057

E-mail

henning.dicks@agriportance.com

Website

www.agriportance.com